

Understanding Multiple Communities at Rutgers

The definition of "community" continues to expand impart by those embracing diversity. We celebrate Rutgers' student body because of the rich diversity in race, gender, aptitude, and socio-economic backgrounds. Our students have distinct talents, drive and vision, but all share in the same goal—to be a valued part of Rutgers, the State University of New Jersey.

To put you in touch with your academic interests, UCC will keep you informed about the multiple communities and various resources that will meet your diverse needs within Rutgers.

Did you know that nearly 10% of the undergraduate population are adult and nontraditional students in New Brunswick/Piscataway? It may even be larger and so we continue to encourage adult and nontraditional students to affiliate with UCC. We also ask that our current affiliates persuade traditional-aged students having nontraditional, significant non-academic commitments to affiliate with the [University College Community](#).

Under the umbrella of the [Office of Undergraduate Education](#), UCC encourages all students to engage actively with the various Rutgers communities beyond the classroom to complement their academic coursework. Students are able to concurrently affiliate with multiple communities of interest outside of their schools of enrollment.

One concurrent affiliation UCC recommends highly to all women is the [Bunting Program](#), which is part of the Douglass Residential College that provides individualized advising and support services for mature women students. Multiple affiliations within Rutgers allows specialized units to reach you and provide targeted services just for you.

Demystifying Parking at Rutgers New Brunswick

The [Rutgers Department of Transportation Services](#) (DTS) is committed to providing all members of the Rutgers, New Brunswick campus with the best possible solutions for getting around campus safely and easily. DTS continues to address challenging accommodations for commuting students, resident students, and Rutgers Employees.

In an effort to help students understand their role, DTS continues to provide up-to-date information on their website and provide answers to most [frequently asked questions](#).

UCC is aware that the majority of nontraditional students are commuters and that working-professional students face additional challenges getting to class after a full-day of work. In an effort to help them manage their time and become "greener", we are offering the following tips:

- Try to Limit the days you come to campus for classes to one day a week or weekends.
- Try to Limit your class selection to evenings to benefit from the more flexible parking lot choices offered by the [night commuter permits](#) that are valid from 4:00 PM-2:00 AM, Monday-Friday, and all day Saturday-Sunday
- Try to add an additional 1 – 2 hours to your class meeting time to get from designated lots on campus to your classroom if you plan on attending day classes, lots are restricted .
- Talk to coworkers and fellow students in an effort to share the commute from work to class by carpooling or setting up a convenient drop off/pick up time and site.
- Learn about Rutgers at [Freehold](#).

P.E.O. Program for Continuing Education for Women

The Philanthropic Educational Organization ([P.E.O.](#)) Program for Continuing Education (PCE) was established in 1973 to provide need based grants to women in the United States and Canada whose education has been interrupted and who find it necessary to return to school to support themselves and/or their families. In the future learn more about [P.E.O. "women helping women to reach for the stars."](#)

Scholarships for Adults

Adult students have difficulty in attending college and in some cases paying for it. Some adults may need to choose between filling a gas tank and buying a book. Visit [College Scholarship](#) and review need-based scholarships as well as scholarships that are provided for [student-specific](#) audiences.

In This Issue

Understanding Communities	1
Demystifying Parking	1
Scholarship Opportunities	1
Academic Planning	2
UC Initiatives	2
NTS Resources	2
UCC Highlights	3
UC Council	3
NTS Student Story	4

**Academic Planning
Pre-Registration for the
The Spring 2009 Term**

Registering in advance is an important part of proactive academic planning for all students, especially UCC affiliates. As continuing students, you are expected to register in advance to ensure you get the courses you need at times and locations suitable to you.

Pre-registration is offered in order to give you an opportunity to schedule courses prior to the University registering new students.

By registering early you allow departments to gauge the demand for courses, which in turn could impact the addition of more sections and allow UCC to promote the opening of more courses.

Beginning Sunday, November 2, 2008 at 10:00 p.m. through November 21, 2008, undergraduate students will be able to pre-register in the order of highest to lowest degree credits earned to date (which does not include credits that students are enrolled in during the current Fall 2008 semester).

Major/Minor Fair Awareness

Have you decided on a major or minor? Attend the SAS major fair and meet department representatives to discuss questions on Wednesday, October 22, 2008

The event runs from 1:00 pm to 4:00 pm on the College Ave Campus—Rutgers Student Center - MPR. Can't make the time? Visit the [New Brunswick Academic Department and Programs](#) site and the [SAS Major/Minor site](#) for additional details.

Policy Awareness

Taking a leave of absence requires much thought in how it may impact your return, your finances, and your goal of attaining a degree. Speak to your advisor to ensure that you are aware of financial aid requirements and limitations before you postpone your academic plans.

**University College
Community Initiatives**

Scheduling Assistance Pilot

Adults and working professionals encounter many challenges when registering for courses. Ideally, courses are chosen to fit academic requirements, but in many cases adults make course choices based on circumstances impacting their work schedule, family schedules, parking permit location, and lastly, on the availability of courses.

In an effort to help our nontraditional students choose courses efficiently, UCC will embark on a pilot project by providing our affiliates the opportunity to view a list of courses by selecting the department first then checking selections by campus locations, level of courses, and the period of the day.

Our students have expressed that they prefer to see complete course list offerings by day only, time slots only or credit values.

Since this is a pilot, we ask for feedback at ucc@rci.rutgers.edu at the end of the Spring 2009 preregister period.

**Nontraditional Student
Resources**

**Center for International
Faculty and Student
Services**

The [Center for International Faculty and Student Services](#) coordinates cultural programs and immigration-related services for approximately 3,000 international students, scholars, faculty, and their dependents, and serves the broader campus community in an advisory capacity.

The Center's mission is to provide quality and timely services to demystify federal immigration regulations as much as possible for the university constituencies we serve, and to assist members of the campus international community in their cultural adjustment process.

FALL 2008 IMPORTANT SEMESTER DATES	
Spring 2009 Pre-Registration	Sun Nov 9 though Sat Nov 22
Follow Thurs Class Schedule	Tues Nov 25
Follow Fri Class Schedule	Wed Nov 26
Regular Classes End	Wed Dec 10
Reading Days	Thurs Dec 11 & Fri Dec 12
Fall Exams Begin	Mon Dec 15
Fall Exams End	Mon Dec 22
Winter Recess Begins	Tue Dec 23
Winter Recess Ends	Mon Jan 19, 2009
Winter Session Begins	Fri Dec 26
Winter Session Ends	Fri Jan 16
Spring Semester Begins	Tue Jan 20
Regular Sat Classes begin	Jan 24

Dean's Forum Highlights

The Dean's forum, which took place on Friday, October 3, 2008, was held at the University College Community's new location: [University Inn & Conference Center](#). Over ninety individuals attended the event, which included faculty and Deans from the School of Management and Labor relations, School of Environmental and Biological Sciences, School of Arts and Sciences and the University College Council and Alumni Association.

The Dean's Forum is an annual event in which nontraditional students are asked to share their experiences and provide information in areas where Rutgers can improve on the academic success of nontraditional students. Adults and nontraditional students expressed practical needs and steps that Rutgers can take to support their academic success.

- ⇒ More weekend, evening and on-line courses
- ⇒ Tutoring services expanded to include adult needs
- ⇒ Enhanced schedule of classes search engine
- ⇒ Continue transition program for adults entering Rutgers
- ⇒ Expanded commuter parking privileges

Constitution Day Highlights

Working adult students were invited to come together as a community to learn about fundamental laws important to all working professionals. As part of the Rutgers Annual Constitution Day, Inc., University College Community, University College Council, the School of Management and Labor Relations, and the Office of Academic Engagement and Programming hosted the event which consisted of a reception and lecture on Wednesday, September 17, 2008 at the [Labor Education Center](#) Auditorium. Over ninety-five individuals attended the event and were very surprised to learn that their rights in the workplace could be nonexistent. The constitution's mention of the rights to privacy, due process, and freedom of speech does not exist if worker's are not part of a workers union or if they do not have a binding employment contract. Education lectures like these have impacted the growing interest in majoring or taking courses offered by the School of Management and Labor Relations, which is endorsed by UCC as a great working professional's program.

University College Community Has Moved!

University College Community has recently moved to University inn and Conference Center, located on Douglass Campus, 178 Ryders Lane. Our new office location offers parking convenience for our students, and it has a large lounge area where adult and nontraditional students can do their homework, work on their computers, or simply unwind and relax before class. Our offices are on the 3rd floor, and this is where you should continue to come and get academic advising or for help in solving a problem or finding out information about the resources available to adult and nontraditional students. You can call us at 732-932-6965 for an appointment, or you can drop by anytime.

Nontraditional Student Resources

University College Council

Get involved with the [University College Council](#) and be part of a community of passionate students advocating for change to ease the difficulties that adult and nontraditional students must face every day, from parking to finding more course formats and class offerings during the evening and weekends.

As University College Council members, students can remove impediments to their education at Rutgers. Students make the difference.

Please note that along with making a combined effort to understand the concerns of adult and nontraditional students, University College Council also works toward defining and advocating for local issues and plays a critical part in university-wide discussions and campaigns.

We understand it may be difficult to attend meetings so we encourage you to reach out to UC Council by expressing your needs.

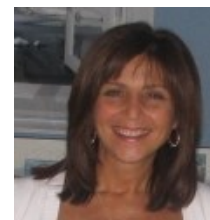
To join or get more information email:

ucc@rci.rutgers.edu

UCC Student Highlights:

Adult Student, Aresty Researcher and Successful Graduate

Regina Reilly, 47, started her academic career at the age of 40. As a wife and doting provider to 2 Siberian Huskies, she earned an Associates in Liberal Arts from Middlesex County College while attending classes part time for 4 years and working full time for a ship broker. Reilly transferred to Rutgers' Livingston College in September 2006 and later earned a Bachelors in Social Work in May 2008 with a 4.0 GPA. Her transition into Rutgers wasn't easy, but she managed to thrive. She exclaimed, "I guess you can teach an old dog new tricks!"



"Aresty Research really made me feel good about myself. I would do it again in a heartbeat."

"The most difficult challenge I faced as an adult student at Rutgers was getting up the nerve to do it. I was petrified! I had been working full time for basically 25 years and was successful in my career. I was afraid of how I was going to feel if I was not successful in the academic world. My role changed from full-time employee to full-time student," says Reilly. An added challenge was trying to balance personal life with academia. Reilly recalls, "[it] sometimes got a little frustrating, but things always have a way of working out."



Aresty Symposium. Dr. DuWayne Battle, Director of the Undergraduate Social Work program and Faculty Advisor (left), Regina Reilly, Paul Robeson Scholar and Dr. Don Stagger, Professor in the Social Work Department and thesis Reader. (left).

Reilly received an email inviting students to apply to be a Paul Robeson Scholar, which included writing an honors thesis. The prospect of writing a thesis encouraged her to apply. Once accepted, she was greeted with support and direction by the [Aresty staff](#) and developed her thesis question: "If our country were to suffer another [911] attack of great magnitude, and prospective rescue workers perceived life-threatening risks to their health, would they volunteer?" This question led to Reilly's in-depth research entitled "Forsaken Heroes: The Aftermath of the Rescue/Recovery Operation at the World Trade Center." It focused on the volunteers who had helped during the search, rescue, recovery and cleanup at Ground Zero and who are now sick. As a Paul Robeson Scholar, she later presented her work at the Aresty Symposium.

Reilly explained that her research took a lot of work but it was worth all her extra time and effort. For any adult student considering an enhanced research opportunity, she recommends that one seriously think about the time that will be taken away from other areas of your life, like being with family or friends, hobbies, entertainment, etc.

"As adults, our lives are generally pretty full, so that is a serious consideration. You really have to want to do it and I say go for it! It is an amazingly rewarding experience to have gone through the process and see it come to fruition. It really made me feel good about myself. I would do it again in a heartbeat."

As for Dave, Reilly's husband, he may not want Regina to do another project right away, but he will support her. The price Dave paid most to be married to a very determined student...lots of leftover meals.

Reilly will commence graduate studies at Columbia University School of Social Work in New York this fall in the Advanced Standing program and expects to earn her Master of Science in Social Work in May 2009. She hopes to return to Rutgers in the not-so-distant future and earn her Doctorate in Social Work.

University College Community

Dr. Susan Schurman, Dean

Betsy Feliciano-Berrios, Asst. Dean for Recruitment & Student Services

Dr. Kay Lynch, Senior Coordinator of Special Programs

John Muth, Senior Coordinator of Special Populations

Bonnie Katz, Administrative Assistant

Fidelia Pokuah, Secretarial Assistant

Location:

University Inn & Conference Ctr.
178 Ryders Lane, 3rd Floor
New Brunswick, NJ 08901

Phone: 732-932-6965

Email: ucc@rci.rutgers.edu